

Attachment A1 - COURSES

One lap of a standard course will consist of a circuit of buoys listed as follows. Marks in **bold** denote rounding marks, those in *italics* are passing marks to be left on the side indicated.

- A:- Start South about, **SL,8,2,M,5,3,FL** - all buoys to port (Inner triangle port)
- B:- Start North about, **SL,3,2,5,M,8,FL** - all buoys to stbd. (Inner triangle stbd)
- C:- Start South about, **SL,8,2,3,6,4,3,FL** - all buoys to port. (North triangle port)
- D:- Start North about, **SL,3,4,6,3,2,8,FL** -all buoys to stbd. (North Triangle stbd)
- E:- Start South about, **SL,8,2,3,6,5,3,FL** - all buoys to port. (Mid Triangle port)
- F:- Start North about, **SL,3,2,5,6,3,2,8,FL** -all buoys to stbd. (Mid Triangle stbd)
- G:- Start South about, **SL,8,2,7,6,2,3,FL** - all buoys to port (South Triangle port)
- H:- Start North about, **SL,3,2,6,7,2,8,FL** - all buoys to stbd. (South Triangle stbd)
- I:- Start South about, **SL,8,2,3,4,3,FL** - all buoys to port (Scalby & back port)
- J:- Start North about, **SL,3,4,3,2,8,FL** - all buoys to stbd. (Scalby & back stbd)
- K:- Start South about, **SL,8,2,3,5,2,3,FL** -all buoys to port. (Easterly & back port)
- L:- Start North about, **SL,3,2,5,3,2,8,FL** -all buoys to stbd. (Easterly & back stbd)
- M:- Start South about, **SL,8,2,3,6,2,3,FL** -all buoys to port. (Wheatcroft & back port)
- N:- Start North about, **SL,3,2,6,3,2,8,FL** -all buoys to stbd. (Wheatcroft & back stbd)
- O:- Start South about, **SL,8,2,7,8,2,3,FL** -all buoys to port. (Cayton & back port)
- P:- Start North about, **SL,3,2,8,7,2,8,FL** -all buoys to stbd. (Cayton & back stbd)
- X:- Any course announced via VHF detailing order of marks and side to be left.

Note:- Buoy 5a may be substituted for buoy 5, to be announced by VHF.

Please note the finish line is designated as a continued obstruction unless finishing or completing a lap.

ALTERNATIVE COURSES

Alternative courses additional to the above may be announced by VHF CH37 including mark rounding instructions. Board "X" to be displayed at the Race Station. It is advised that a means of writing down the course is made available.

COASTAL RACE COURSES

The Course will be selected from the list below and indicated by a numeral board at the Racing Station.

- | | | |
|----------|---|---------------|
| Course 1 | Start North about, leave No3 to starboard, to Whitby bell buoy, round to port, leave No3 to port finish North to South. | 32 NM approx. |
| Course 2 | Start North about, leave No3 to starboard, to Scalby Outfall buoy, round to starboard, leave Nos 3, 2 & 8 to starboard, to Filey bell buoy, round to starboard, leave No8 to starboard Finish South to North; Two laps. | 32 NM approx. |
| Course 3 | Start South about, leave No8 to port, to Filey bell buoy, round to Port, leave Nos 8, 2 & 3 to port, to Scalby Outfall buoy, round to port, leave No3 to port, finish North to South. Two Laps. | 32 NM approx. |
| Course 4 | Start North about, leave No3 to starboard, to a line at 54.26N (Robin Hoods Bay) leave No3 to port finish North to South. Take a pic of GPS readout to confirm position at 54.26N | 20 NM approx. |
| Course 5 | Other courses may be made announced by VHF prior to the 10 minute signal. | |

Races may be shortened to finish at any Course Buoy. This will be announced on VHF channel 37. Yachts shall be deemed to have finished on rounding the buoy on the required side, turning on the mark and crossing the vector extending from the course from the previous mark. Yachts to take their own time when passing each buoy and note any yachts ahead and astern. See SYC SI 15.3 and 15.3.1

Attachment A2 - BAY RACE BUOYS

APPROXIMATE POSITION OF MARKS

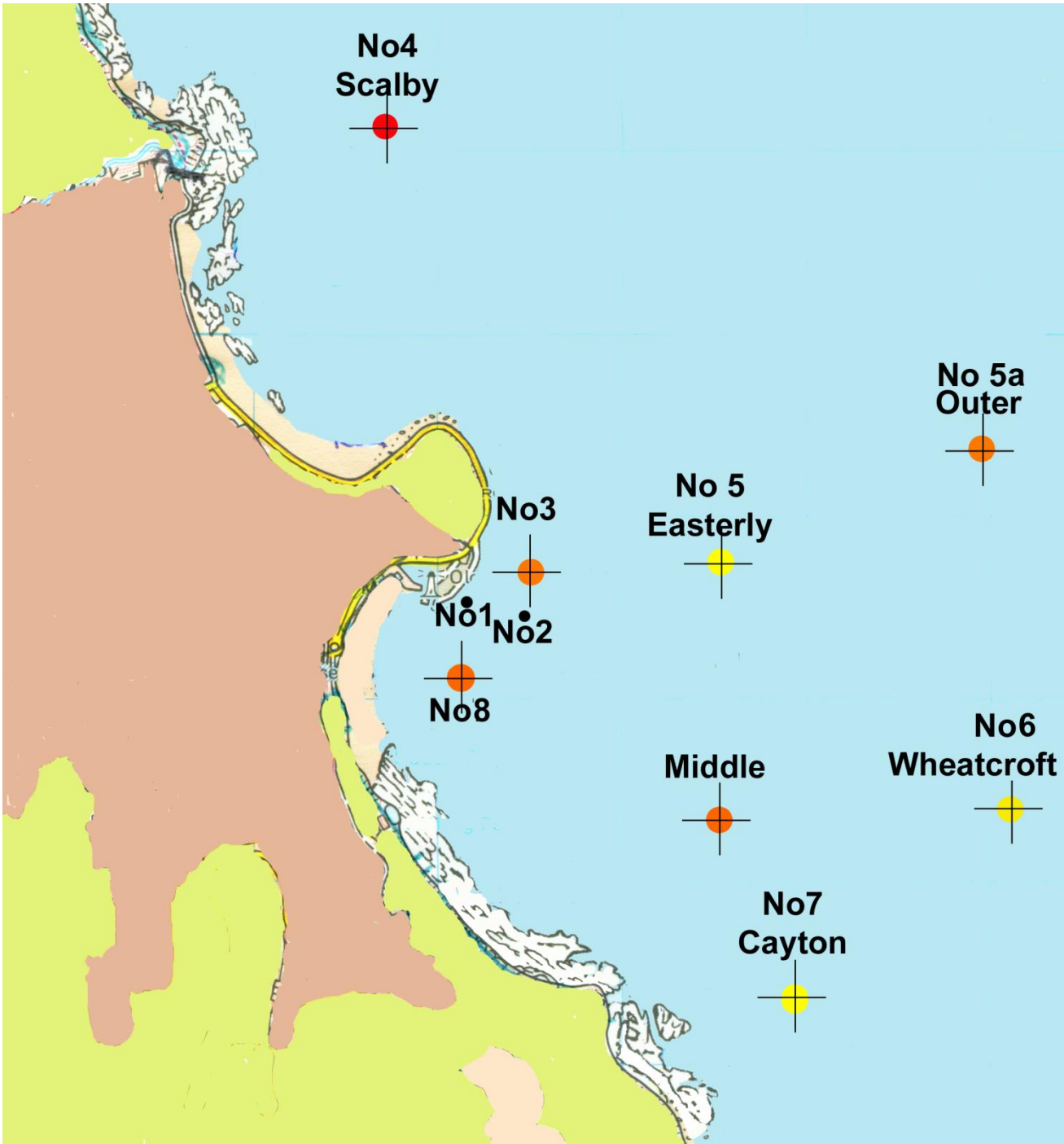
| | | | |
|-------|---|-------------|------------|
| No1- | Inner distance mark – Staff, Yellow/Black flags | | |
| No2- | Outer distance mark – Staff, Yellow/Black flags | 054 16.82 N | 000 22.90W |
| No3- | North turning mark – Staff, Orange flag | 054°17.01N | 000°22.66W |
| No4- | Scalby outfall – Red Can | 054°18.60N | 000°23.40W |
| No5- | SYC Easterly mark – Staff, Orange flag | 054°16.88N | 000°21.99W |
| No5a- | SYC Outer mark – Staff, Orange flag | 054°17.30N | 000°20.70W |
| No6- | Wheatcroft outfall – Yellow Can | 054°16.30N | 000°20.50W |
| No7- | SYC Cayton mark – Staff, 2 Orange flags | 054°15.98N | 000°21.58W |
| No8- | South turning mark – Staff, Orange flag | 054°16.71N | 000°23.20W |
| No9- | Filey Bell Buoy – E Cardinal | 054°12.70N | 000°14.60W |
| “M” | Middle Mark – Staff, Orange flag | 054°16.50N | 000°22.13W |

Temporary marks may be laid and will be identified by VHF prior to the start.

APPROXIMATE BEARINGS TO MARKS

| | | | |
|----------------------------|-----|----------------------------|-----|
| No3 TO NO 4 SCALBY | 350 | NO5A OUTER TO NO7 CAYTON | 210 |
| No3 TO NO5 EAST | 090 | NO5A OUTER TO No8 | 250 |
| No3 TO NO5A OUTER | 080 | NO5A OUTER TO No3 | 260 |
| No3 TO NO6 WHEATCROFT | 120 | NO6 WCROFT TO NO4 SCALBY | 315 |
| No3 TO NO7CAYTON | 155 | NO6 WHEATCROFT TO NO5 EAST | 310 |
| NO4 SCALBY TO NO5 EAST | 150 | NO6 WCROFT TO NO5A OUTER | 350 |
| NO4 SCALBY TO NO5A OUTER | 120 | NO6 WCROFT TO NO7 CAYTON | 225 |
| NO4 SCALBY TO NO6 WCROFT | 135 | NO6 WHEATCROFT TO No8 | 285 |
| NO4 SCALBY TO No3 | 170 | NO6 WHEATCROFT TO No3 | 300 |
| NO5 EAST TO NO4 SCALBY | 330 | NO7 CAYTON TO No8 | 315 |
| NO5 EAST TO NO5A OUTER | 070 | NO7 CAYTON TO No3 | 335 |
| NO5 EAST TO NO6 WHEATCROFT | 130 | NO7 CAYTON TO NO5A OUTER | 030 |
| NO5 EAST TO NO7 CAYTON | 180 | NO7 CAYTON TO NO5 EAST | 000 |
| NO5 EAST TO No8 | 250 | NO7 CAYTON TO NO6 WCROFT | 045 |
| NO5 EAST TO No3 | 270 | No8 TO NO5 EAST/NO5A OUTER | 070 |
| NO5A OUTER TO NO4 SCALBY | 300 | No8 TO NO6 WHEATCROFT | 105 |
| NO5A OUTER TO NO6 WCROFT | 170 | No8 TO NO7 CAYTON | 135 |

Race Marks 2023/4



Attachment A3 - Additional starting information

STARTING LINE

A Transit of the diamond on the Club Starting Station and the diamond on the outer pier in line.

LIMIT MARKS

The start line is limited by limit marks as earlier set out. The ODM and IDM, which may be tide borne, form a starting gate. and yachts must pass through this gate when starting and between the ODM and the outer pier when finishing and at the completion of each lap unless sailing course "X" where different instructions will be announced by VHF. The start line should be regarded as a continued obstruction at all other times.

PLEASE NOTE the No3 and 8 buoys are marks on the course FOR ALL RACES, except for boats sailing course "X" where they may have the starting buoys omitted from their course except when starting or finishing and after the first rounding of No3 or 8, this will be announced by VHF. The purpose of buoys 3 and 8 when laid is to give the Race Officer a good view of boats approaching or leaving the start/finish line at the start, on completion of each lap and at the finish of a race. Therefore, after starting a race, boats are only permitted to round buoys 3, 8 on completion of each lap of the course and in the direction specified and should keep clear of the Start/Finish line at all other times, keeping East of the Outer Distance Mark.

STARTING SIGNALS - amends RRS 26

Yachts will start either together or in succession in the order of Classes as defined in Attachment A4 . Class 3, 4 AND 5 signals will be used if General Recalls are required.

SINGLE START. For a single start the following signals will be made from the Racing Station: -

| SIGNAL | LIGHTS | HORN | MEANING |
|--------------------|--------------|------|------------------|
| Warning signal | Yellow | One | 10 mins to start |
| Preparatory signal | Yellow Green | One | 5 mins to start |
| Starting signal | Lights OUT | One | START |

MULTIPLE STARTS. For a succession of starts the following signals will be made:-

| SIGNAL | LIGHTS | HORN | MEANING | CLASS |
|-------------|--------------|------|---------|---------|
| Warning | Yellow | One | 10 mins | Class 1 |
| Preparatory | Yellow Green | One | 5 mins | Class 1 |
| Warning | | | 10 mins | Class 2 |
| Starting | Yellow OUT | One | START | Class 1 |
| Preparatory | Green Red | | 5 mins | Class 2 |
| Warning | | | 10 mins | Class 3 |
| Starting | Green OUT | One | START | Class 2 |
| Preparatory | Red Yellow | | 5 mins | Class 3 |
| Warning | | | 10 mins | Class 4 |
| Starting | Red OUT | One | START | Class 3 |
| Preparatory | Yellow Green | | 5 mins | Class 4 |
| Warning | | | 10 mins | Class 5 |
| Starting | Yellow OUT | One | START | Class 4 |
| Preparatory | Green | | 5 mins | Class 5 |
| Starting | Green OUT | One | START | Class 5 |

The system will give signals for five Classes irrespective of any Class not starting or if a General Recall is not required. Signals for these Classes will be ignored in such cases. In the event of system failure lights prevail.

Attachment A4 - Supplementary race information

BAY RACES

6 CLASSES

6.1 Boats will start as multiple classes for Sunday Series Races.

6.2 Boats will start as a single class for Commodores Trophy Series, Coastal Series and also Trophy Races unless incorporated with a Sunday Series Race or detailed in Race Instructions.

8.1 BAY RACE DESIGNATION

8.1.1 In class racing One Design classes may elect to sail a different course when the Cruiser classes sail a bay course. This will be announced by VHF and will follow the same mark roundings as the cruisers.

8.1.2 A Standard Course will consist of up to 4 laps, a One Design Course will consist of up to 6 laps unless shortened.

8.1.3 Shortened course to be indicated as detailed in RRS 32, this will be signalled as the lead boat in the relevant class approaches the No3 or No8 turning mark. For One Design Classes sailing course "X" shortening will be signalled as they approach the turning mark prior to starting the final lap and they will then proceed to their mark and finish as detailed in Attachment A1. This may be superseded by VHF instructions from the Race Station.

8.1.4 Reduced number of laps may be announced by VHF prior to the start without visual signal.

8.1.5 Races may be shortened to finish at any passing of a Course Buoy where practicable.

MIDWEEK PURSUIT RACES

5 HANDICAPS

Handicaps will be posted on the Club Notice Board some time prior to each race.

5.1 Any handicap adjustments will be effective from the Race Number in which the adjustment is posted. If no new handicap is made in the column against a yacht, the handicap will remain the same as the last entry shown. Handicaps will increase by 4 minutes for a 1st place, 3 minutes for 2nd, 2 minutes for 3rd and 1 minute for 4th. Owners and skippers are responsible for being in possession of their current handicaps from the board. Handicaps are in multiples of half minutes only. Boats Handicaps may be announced by VHF

6 Yachts will race as one Class. Class Flag will be IC Numeral 1.

8 COURSES

The course will be a Pursuit Race of one Round of course E, F, G, H, I, J, K, L, M, N, O, P or X as described in Attachment A1.

11 STARTING

11.2 The Single Start procedure as given in Attachment A3 will be used, yachts starting on handicap taking their time from the Starting Signal.

11.2 Any boat not within its own five minute starting sequence must keep clear of other boats in theirs. Any yacht motoring within 5 minutes of their start time shall stop their engine and complete a two-turns penalty before starting. This applies to all pursuit races.

11.3 Recalls. (modifies SYC SI 11.2.1)

At the discretion of the RO, recalls may be made. These will be individual and made on VHF Ch 'M'. Any yacht starting before her handicap time and not answering a recall (if any) will be classed OCS.

COASTAL RACES

5 CLASSES

Boats will race as one class using RYA YTC Handicap.

11 STARTING

The Single Start procedure as given in Attachment A3 will be used.

18 PERSONAL LIFE JACKETS

Life jackets (not buoyancy aids) are to be worn on yachts with no guard rails for all coastal races.

20 Autohelms may be used on coastal races only if sailing single or two handed **and only when changing sails or in emergencies.**

OFFSHORE, OPEN AND SPECIAL PURSUIT RACES

Special Race Instructions for these races will be available in the Clubhouse. The Special Race Instructions are in addition to these instructions, if there is an inconsistency or conflict the Special Race Instructions will take precedence.

CREW LIMITATIONS

- 18.1 Except where class rules apply, there shall be no maximum number of crew whilst racing. Minimum crew for Bay Races is two, Coastal races minimum is one. Safety equipment shall be provided for all crew aboard. Sonata class minimum crew limit two, this amends Sonata class rule C2.1 (a). Open events, Sonata class rules apply.