

## Attachment A1 - COURSES

One lap of a standard course will consist of a circuit of buoys listed as follows. Marks in **bold** denote rounding marks, those in *italics* are passing marks to be left on the side indicated.

- |     |  |                          |
|-----|--|--------------------------|
| A:- | Start South about, <b>SL,8,2,M,5,3,FL</b> - all buoys to port              | (Inner triangle port)    |
| B:- | Start North about, <b>SL,3,2,5,M,8,FL</b> - all buoys to stbd.             | (Inner triangle stbd)    |
| C:- | Start South about, <b>SL,8,2,3,6,4,3,FL</b> - all buoys to port.           | (North triangle port)    |
| D:- | Start North about, <b>SL,3,4,6,3,2,8,FL</b> -all buoys to stbd.            | (North Triangle stbd)    |
| E:- | Start South about, <b>SL,8,2.3,6,5,3,FL</b> - all buoys to port.           | (Mid Triangle port)      |
| F:- | Start North about, <b>SL,3,2,5,6.3.2,8,FL</b> -all buoys to stbd.          | (Mid Triangle stbd)      |
| G:- | Start South about, <b>SL,8,2,7,6,2,3,FL</b> - all buoys to port            | (South Triangle port)    |
| H:- | Start North about, <b>SL,3,2,6,7,2,8,FL</b> - all buoys to stbd.           | (South Triangle stbd)    |
| I:- | Start South about, <b>SL,8,2,3,4,3,FL</b> - all buoys to port              | (Scalby & back port)     |
| J:- | Start North about, <b>SL,3,4,3,2,8,FL</b> - all buoys to stbd.             | (Scalby & back stbd)     |
| K:- | Start South about, <b>SL,8,2,3,5,2,3,FL</b> -all buoys to port.            | (Easterly & back port)   |
| L:- | Start North about, <b>SL,3,2,5,3,2,8,FL</b> -all buoys to stbd.            | (Easterly & back stbd)   |
| M:- | Start South about, <b>SL,8,2,3,6,2,3,FL</b> -all buoys to port.            | (Wheatcroft & back port) |
| N:- | Start North about, <b>SL,3,2,6,3,2,8,FL</b> -all buoys to stbd.            | (Wheatcroft & back stbd) |
| O:- | Start South about, <b>SL,8,2,7,8,2,3,FL</b> -all buoys to port.            | (Cayton & back port)     |
| P:- | Start North about, <b>SL,3,2,8,7,2,8,FL</b> -all buoys to stbd.            | (Cayton & back stbd)     |
| X:- | Any course announced via VHF detailing order of marks and side to be left. |                          |

Note:- Buoy 5a may be substituted for buoy 5, to be announced by VHF.

Please note the finish line is designated as a continued obstruction unless finishing or completing a lap.

### ALTERNATIVE COURSES

Alternative courses additional to the above may be announced by VHF CH37 including mark rounding instructions. Board "X" to be displayed at the Race Station. It is advised that a means of writing down the course is made available.

## COASTAL RACE COURSES

The Course will be selected from the list below and indicated by a numeral board at the Racing Station.

- |          |   |               |
|----------|---|---------------|
| Course 1 | Start North about, leave No3 to starboard, to Whitby bell buoy, round to port, leave No3 to port finish North to South.   | 32 NM approx. |
| Course 2 | Start North about, leave No3 to starboard, to Scalby Outfall buoy, round to starboard, leave Nos 3, 2 & 8 to starboard, to Filey bell buoy, round to starboard, leave No8 to starboard Finish South to North; Two laps. | 32 NM approx. |
| Course 3 | Start South about, leave No8 to port, to Filey bell buoy, round to Port, leave Nos 8, 2 & 3 to port, to Scalby Outfall buoy, round to port, leave No3 to port, finish North to South. Two Laps.                         | 32 NM approx. |
| Course 4 | Start North about, leave No3 to starboard, to a line at 54.26N (Robin Hoods Bay) leave No3 to port finish North to South. Take a pic of GPS readout to confirm position at 54.26N                                       | 20 NM approx. |
| Course 5 | Other courses may be made announced by VHF prior to the 10 minute signal.   |               |

Races may be shortened to finish at any Course Buoy. This will be announced on VHF channel 37. Yachts shall be deemed to have finished on rounding the buoy on the required side, turning on the mark and crossing the vector extending from the course from the previous mark. Yachts to take their own time when passing each buoy and note any yachts ahead and astern. See SYC SI 15.3 and 15.3.1

# Attachment A2 - BAY RACE BUOYS

## APPROXIMATE POSITION OF MARKS

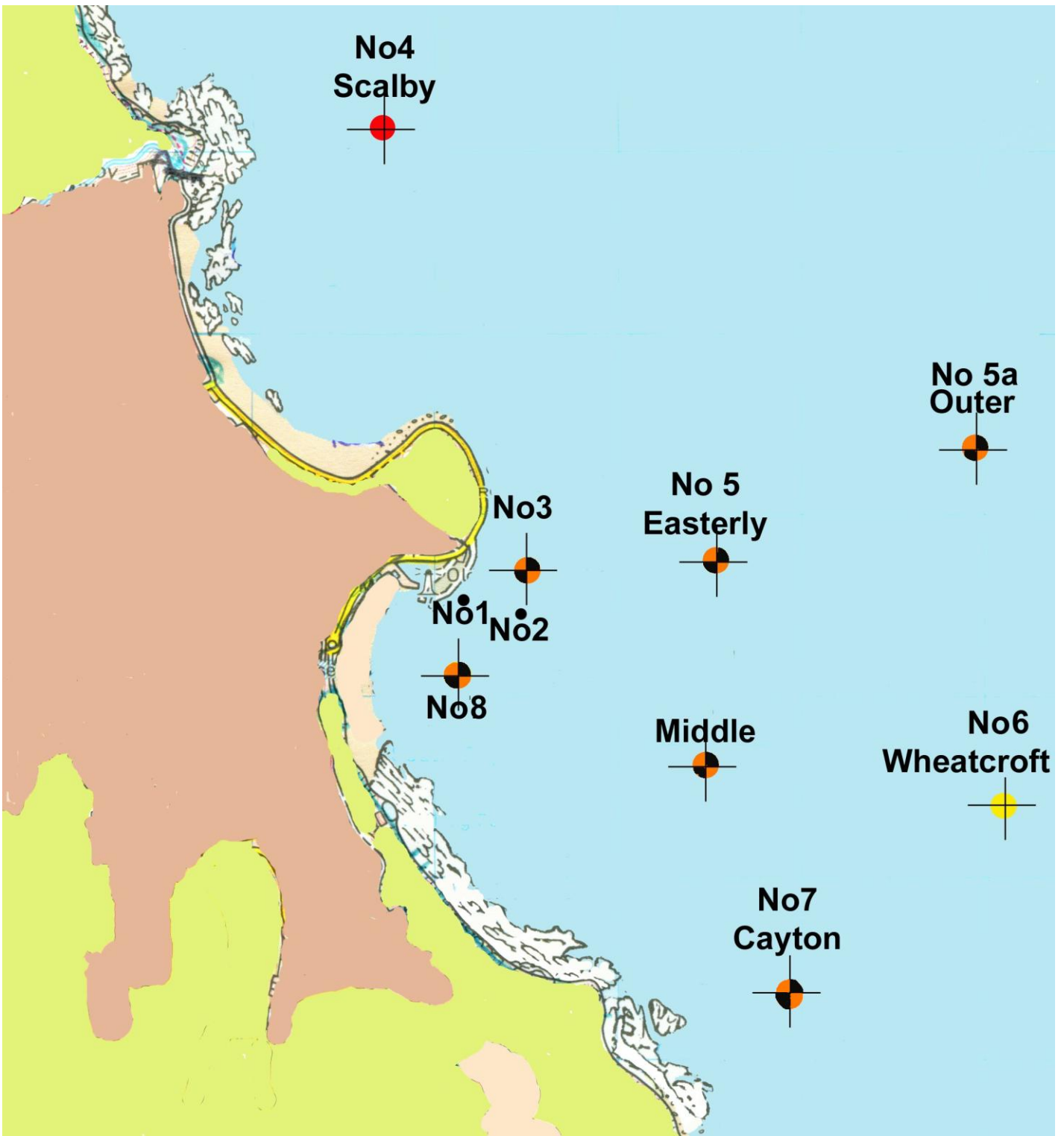
No1- Inner distance mark – Staff, Yellow/Black flags		
No2- Outer distance mark – Staff, Yellow/Black flags	054 16.82 N	000 22.90W
No3- North turning mark – Staff, Orange/Black/Orange flags	054°17.01N	000°22.66W
No4- Scalby outfall – Red Can	054°18.60N	000°23.40W
No5- SYC Easterly mark – Staff, Orange/Black/Orange flags	054°16.88N	000°21.99W
No5a SYC Outer mark – Staff, Orange/Black/Orange flags	054°17.30N	000°20.70W
No6- Wheatcroft outfall – Yellow Can	054°16.30N	000°20.50W
No7- SYC Cayton mark – Staff, Orange/Black/Orange flags	054°15.98N	000°21.58W
No8- South turning mark – Staff, Orange/Black/Orange flags	054°16.71N	000°23.20W
No9- Filey Bell Buoy – E Cardinal	054°12.70N	000°14.60W
“M” Middle Mark – Staff, Orange/Black/Orange flags	054°16.50N	000°22.13W

Temporary marks may be laid and will be identified by VHF prior to the start.

## APPROXIMATE BEARINGS TO MARKS

No3 TO NO 4 SCALBY	350	NO5A OUTER TO NO7 CAYTON	210
No3 TO NO5 EAST	090	NO5A OUTER TO No8	250
No3 TO NO5A OUTER	080	NO5A OUTER TO No3	260
No3 TO NO6 WHEATCROFT	120	NO6 WCROFT TO NO4 SCALBY	315
No3 TO NO7CAYTON	155	NO6 WHEATCROFT TO NO5 EAST	310
NO4 SCALBY TO NO5 EAST	150	NO6 WCROFT TO NO5A OUTER	350
NO4 SCALBY TO NO5A OUTER	120	NO6 WCROFT TO NO7 CAYTON	225
NO4 SCALBY TO NO6 WCROFT	135	NO6 WHEATCROFT TO No8	285
NO4 SCALBY TO No3	170	NO6 WHEATCROFT TO No3	300
NO5 EAST TO NO4 SCALBY	330	NO7 CAYTON TO No8	315
NO5 EAST TO NO5A OUTER	070	NO7 CAYTON TO No3	335
NO5 EAST TO NO6 WHEATCROFT	130	NO7 CAYTON TO NO5A OUTER	030
NO5 EAST TO NO7 CAYTON	180	NO7 CAYTON TO NO5 EAST	000
NO5 EAST TO No8	250	NO7 CAYTON TO NO6 WCROFT	045
NO5 EAST TO No3	270	No8 TO NO5 EAST/NO5A OUTER	070
NO5A OUTER TO NO4 SCALBY	300	No8 TO NO6 WHEATCROFT	105
NO5A OUTER TO NO6 WCROFT	170	No8 TO NO7 CAYTON	135

# Race Marks 2025



## Attachment A3 - Additional starting information

### STARTING LINE

A Transit of the diamond on the Club Starting Station and the diamond on the outer pier in line.

### LIMIT MARKS

The start line is limited by limit marks as earlier set out. The ODM and IDM, which may be tide borne, form a starting gate. and yachts must pass through this gate when starting and between the ODM and the outer pier when finishing and at the completion of each lap unless sailing course "X" where different instructions will be announced by VHF. The start line should be regarded as a continued obstruction at all other times.

PLEASE NOTE the No3 and 8 buoys are marks on the course FOR ALL RACES, except for boats sailing course "X" where they may have the starting buoys omitted from their course except when starting or finishing and after the first rounding of No3 or 8, this will be announced by VHF. The purpose of buoys 3 and 8 when laid is to give the Race Officer a good view of boats approaching or leaving the start/finish line at the start, on completion of each lap and at the finish of a race. Therefore, after starting a race, boats are only permitted to round buoys 3, 8 on completion of each lap of the course and in the direction specified and should keep clear of the Start/Finish line at all other times, keeping East of the Outer Distance Mark.

### STARTING SIGNALS - amends RRS 26

Yachts will start either together or in succession in the order of Classes as defined in Attachment A4 . Class 3, 4 AND 5 signals will be used if General Recalls are required.

SINGLE START. For a single start the following signals will be made from the Racing Station: -

SIGNAL	LIGHTS	HORN	MEANING
Warning signal	Yellow	One	10 mins to start
Preparatory signal	Yellow Green	One	5 mins to start
Starting signal	Lights OUT	One	START

MULTIPLE STARTS. For a succession of starts the following signals will be made:-

SIGNAL	LIGHTS	HORN	MEANING	CLASS
Warning	Yellow	One	10 mins	Class 1
Preparatory	Yellow Green	One	5 mins	Class 1
Warning			10 mins	Class 2
Starting	Yellow OUT	One	START	Class 1
Preparatory	Green Red		5 mins	Class 2
Warning			10 mins	Class 3
Starting	Green OUT	One	START	Class 2
Preparatory	Red Yellow		5 mins	Class 3
Warning			10 mins	Class 4
Starting	Red OUT	One	START	Class 3
Preparatory	Yellow Green		5 mins	Class 4
Warning			10 mins	Class 5
Starting	Yellow OUT	One	START	Class 4
Preparatory	Green		5 mins	Class 5
Starting	Green OUT	One	START	Class 5

The system will give signals for five Classes irrespective of any Class not starting or if a General Recall is not required. Signals for these Classes will be ignored in such cases. In the event of system failure lights prevail.

# Attachment A4 - Supplementary race information

## BAY RACES

### 6 CLASSES

6.1 Boats will start as multiple classes for Sunday Series Races.

6.2 Boats will start as a single class for Commodores Trophy Series, Coastal Series and also Trophy Races unless incorporated with a Sunday Series Race or detailed in Race Instructions.

### 8.1 BAY RACE DESIGNATION

8.1.1 In class racing One Design classes may elect to sail a different course when the Cruiser classes sail a bay course. This will be announced by VHF and will follow the same mark roundings as the cruisers.

8.1.2 A Standard Course will consist of up to 4 laps, a One Design Course will consist of up to 6 laps unless shortened.

8.1.3 Shortened course to be indicated as detailed in RRS 32, this will be signalled as the lead boat in the relevant class approaches the No3 or No8 turning mark. For One Design Classes sailing course "X" shortening will be signalled as they approach the turning mark prior to starting the final lap and they will then proceed to their mark and finish as detailed in Attachment A1. This may be superseded by VHF instructions from the Race Station.

8.1.4 Reduced number of laps may be announced by VHF prior to the start without visual signal.

8.1.5 Races may be shortened to finish at any passing of a Course Buoy where practicable.

## MIDWEEK PURSUIT RACES

### 5 HANDICAPS

Handicaps will be posted on the Club Notice Board some time prior to each race.

5.1 Any handicap adjustments will be effective from the Race Number in which the adjustment is posted. If no new handicap is made in the column against a yacht, the handicap will remain the same as the last entry shown. Handicaps will increase by 4 minutes for a 1<sup>st</sup> place, 3 minutes for 2<sup>nd</sup>, 2 minutes for 3<sup>rd</sup> and 1 minute for 4<sup>th</sup>. Owners and skippers are responsible for being in possession of their current handicaps from the board. Handicaps are in multiples of half minutes only. Boats Handicaps may be announced by VHF

6 Yachts will race as one Class. Class Flag will be IC Numeral 1.

### 8 COURSES

The course will be a Pursuit Race of one Round of course E, F, G, H, I, J, K, L, M, N, O, P or X as described in Attachment A1.

### 11 STARTING

11.2 The Single Start procedure as given in Attachment A3 will be used, yachts starting on handicap taking their time from the Starting Signal.

11.2 Any boat not within its own five minute starting sequence must keep clear of other boats in theirs. Any yacht motoring within 5 minutes of their start time shall stop their engine and complete a two-turns penalty before starting. This applies to all pursuit races.

11.3 Recalls. (modifies SYC SI 11.2.1)

At the discretion of the RO, recalls may be made. These will be individual and made on VHF Ch 'M'. Any yacht starting before her handicap time and not answering a recall (if any) will be classed OCS.

## COASTAL RACES

### 5 CLASSES

Boats will race as one class using RYA YTC Handicap.

### 11 STARTING

The Single Start procedure as given in Attachment A3 will be used.

### 18 PERSONAL LIFE JACKETS

Life jackets (not buoyancy aids) are to be worn on yachts with no guard rails for all coastal races.

20 Autohelms may be used on coastal races only if sailing single or two handed **and only when changing sails or in emergencies.**

## OFFSHORE, OPEN AND SPECIAL PURSUIT RACES

Special Race Instructions for these races will be available in the Clubhouse. The Special Race Instructions are in addition to these instructions, if there is an inconsistency or conflict the Special Race Instructions will take precedence.

## CREW LIMITATIONS

18.1 Except where class rules apply, there shall be no maximum number of crew whilst racing. Minimum crew for Bay Races is two, Coastal races minimum is one. Safety equipment shall be provided for all crew aboard. Sonata class minimum crew limit two, this amends Sonata class rule C2.1 (a). Open events, Sonata class rules apply.