



## SAILING INSTRUCTIONS

### 1. RULES

- 1.1 Racing will be governed by the 'rules' as defined in the Racing Rules of Sailing, hereinafter referred to as RRS.
- 1.2 Class rules for one-design entries and boats sailing under a standard one-design rating certificate will apply.
- 1.3 If there is a conflict with the Notice of Race the Sailing Instructions shall prevail.

### 2. NOTICES TO COMPETITORS

Notices to competitors will be posted on the official notice board located in the clubhouse

### 3. CHANGES TO SAILING INSTRUCTIONS

Any change to the sailing instructions will be posted before 0830 on the day it will take effect, except that any change to the schedule of races will be posted by 2100 on the day before it will take effect unless caused by bad weather on the day effected.

### 4. SIGNALS MADE ASHORE

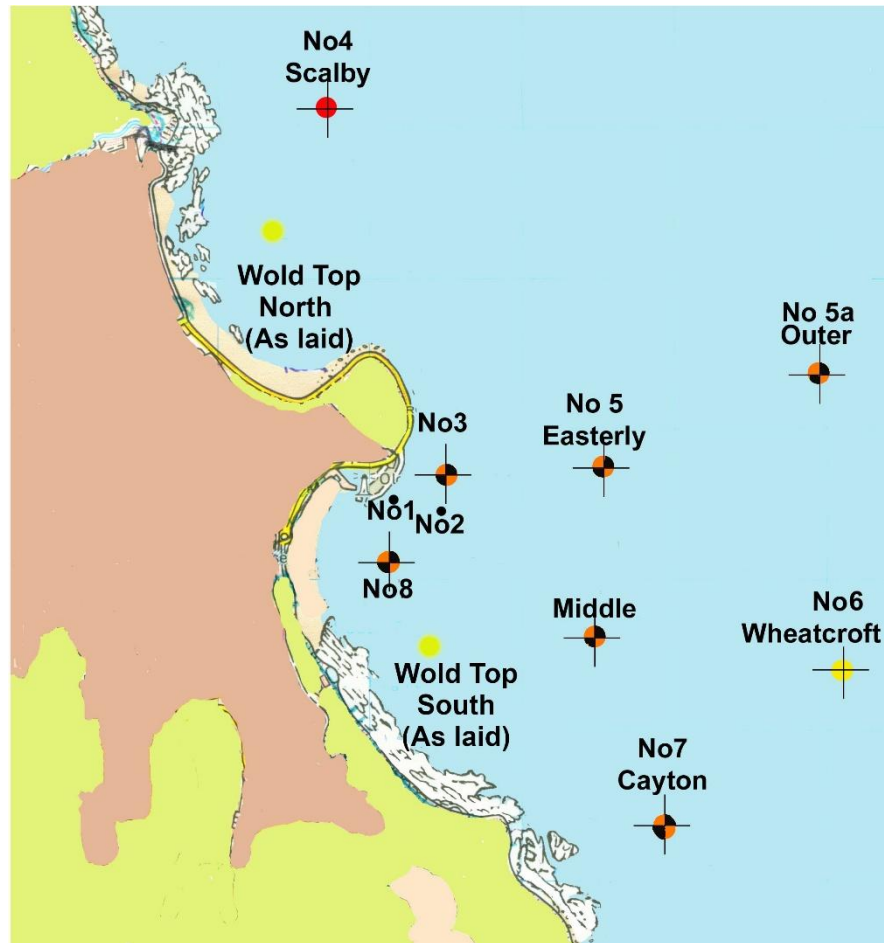
- 4.1 RACING SIGNALS - Modifies RRS Race Signals
  - 4.1.1 Starts will be controlled by lights, see additional starting information Attachment A3.
  - 4.1.2 Yellow flag indicates no racing for open boats without guardrails.
  - 4.1.3 Y Flag signals lifejackets (not personal floatation devices) shall be worn. This modifies rule 27.1.
- 4.2 A board will be displayed at the race station designating course letter.
- 4.3 An additional red with "P" or green with "S" board will be displayed designating which side to leave marks. Red for port, green for starboard.

### 5. SCHEDULE OF RACES

- 5.1 Dates of racing: Saturday 25<sup>th</sup> and Sunday 26<sup>th</sup> April
- 5.2 The scheduled time of the warning signal for each day is
  - Saturday 25<sup>th</sup> 0950
  - Sunday 26<sup>th</sup> 1050
- 5.4 When there has been a long postponement the warning signal will be made as soon as practicable. To alert boats that a race will begin soon, there will be an announcement via VHF Ch 37/M1 at least four minutes before a warning signal is displayed.

## RACING AREAS

Racing will be in the North and South Bays.



## 7 COURSES

One lap of a standard course will consist of a circuit of buoys listed as follows. Marks in **bold** denote rounding marks, those in *italics* are passing marks to be left on the side indicated.

- A:- Start South about, **SL,8,2,M,5,3,FL** - all buoys to port
- B:- Start North about, **SL,3,2,5,M,8,FL** - all buoys to stbd.
- C:- Start South about, **SL,8,2,3,6,4,3,FL** - all buoys to port.
- D:- Start North about, **SL,3,4,6,3,2,8,FL** -all buoys to stbd.
- E:- Start South about, **SL,8,2,3,6,5,3,FL** - all buoys to port.
- F:- Start North about, **SL,3,2,5,6,3,2,8,FL** -all buoys to stbd.
- G:- Start South about, **SL,8,2,7,6,2,3,FL** - all buoys to port
- H:- Start North about, **SL,3,2,6,7,2,8,FL** - all buoys to stbd.
- I:- Start South about, **SL,8,2,3,4,3,FL** - all buoys to port
- J:- Start North about, **SL,3,4,3,2,8,FL** - all buoys to stbd.
- K:- Start South about, **SL,8,2,3,5,2,3,FL** -all buoys to port.
- L:- Start North about, **SL,3,2,5,3,2,8,FL** -all buoys to stbd.
- M:- Start South about, **SL,8,2,3,6,2,3,FL** -all buoys to port.
- N:- Start North about, **SL,3,2,6,3,2,8,FL** -all buoys to stbd.
- O:- Start South about, **SL,8,2,7,8,2,3,FL** -all buoys to port.
- P:- Start North about, **SL,3,2,8,7,2,8,FL** -all buoys to stbd.

- W1:- Start South about, **SL,8,WTS,M,2,3,FL** - all buoys to port
- W2:- Start North about, **SL,3,2,M,WTS,8,FL** - all buoys to stbd.
- W3:- Start South about, **SL,8p,2p,3p,CPp,WTNs,CPs,3p,FL**
- W4:- Start North about, **SL,CPp,WTNs,CPs,3s,2s,8s,FL**
- W5:- Start South about, **SL,8p,WTSp,8p,2p,3p,CPp,WTNs,CPs,3p,FL**
- W6:- Start North about, **SL,3s,CPp,WTNs,CPs,3s,2s,8s,WTSS,8s,FL**
- X:- Any course announced via VHF detailing order of marks and side to be left.

## 8 MARKS (Approximate positions)

No1-	Inner distance mark – Staff, Yellow/Black flags		
No2-	Outer distance mark – Staff, Yellow/Black flags	054 16.82 N	000 22.90W
No3-	North turning mark – Staff, Orange/Black/Orange flags	054°17.01N	000°22.66W
No4-	Scalby outfall – Red Can	054°18.60N	000°23.40W
No5-	SYC Easterly mark – Staff, Orange/Black/Orange flags	054°16.88N	000°21.99W
No5a	SYC Outer mark – Staff, Orange/Black/Orange flags	054°17.30N	000°20.70W
No6-	Wheatcroft outfall – Yellow Can	054°16.30N	000°20.50W
No7-	SYC Cayton mark – Staff, Orange/Black/Orange flags	054°15.98N	000°21.58W
No8-	South turning mark – Staff, Orange/Black/Orange flags	054°16.71N	000°23.20W
No9-	Filey Bell Buoy – E Cardinal	054°12.70N	000°14.60W
“M”	Middle Mark – Staff, Orange/Black/Orange flags	054°16.50N	000°22.13W

Wold Top North and South will be laid on the day and will be identified by VHF prior to the start.

## 9 STARTS

### 9.1 STARTING LINE

A Transit of the red diamond on the Race Station and the red diamond on the outer pier in line.

#### 9.1.1 LIMIT MARKS

The line will be limited by (when laid) the No. 2 Buoy Outer Distance Mark (ODM) and the No1 Buoy the Inner Distance Mark (IDM) these are starting marks and boats shall pass between them or on their relevant required side. ***Competitors shall not devise means whereby although keeping strictly to the rules they avoid the spirit of these instructions and shall endeavour not to sail outside this gate limit before crossing the start line.*** See Attachment A3 for further information.

### 9.2 STARTING SIGNALS

#### 9.2.1 STARTING SIGNALS - amends RRS 26

Yachts will start together, the following signals will be made from the Racing Station: -

SIGNAL	LIGHTS	HORN	MEANING
Warning signal	Yellow	One	10 mins to start
Preparatory signal	Yellow Green	One	5 mins to start
Starting signal	Lights OUT	One	START

#### 9.3 INDIVIDUAL RECALLS - Modifies RRS 29.1

When at her Start a yacht fails to comply with RRS 29.1, a second horn will be sounded and a flashing light will be shown below the starting signals for three minutes. Code flag 'X' will not be flown.

#### 9.4. STARTING PENALTY

A premature starter shall return to the pre-start side of the line before starting.

### 9.5 GENERAL RECALLS - Modifies RRS 29.2

#### 9.5.1 General Recall shall be signalled by two additional horns and flashing light plus announcement by VHF Ch 37a/M1.

### 9.6 VHF RADIO

#### 9.6.1 The Race Station will, when possible, transmit on Channel 37a/M1 after the Warning and Preparatory signals giving the Course.

#### 9.6.2 The Race Station will, when possible, also transmit recalls, course shortening, postponement, cancellation and abandonment.

#### 9.6.3 These transmissions are secondary to the definitive standard visual and sound signals. Except in an emergency no yacht will transmit on this frequency during starting procedures. Shortened course instruction for individual classes may be announced by VHF Ch 37a/M1 only under flag or board “S”.

- 9.6.4 All yachts shall declare their intention to race and number of crew via VHF Ch 37a/M1 prior to the 10 minute signal.
- 9.7 **NUMBER OF STARTERS**  
A minimum of two starters are required to constitute a race.
- 9.8 Any yacht motoring after their preparatory signal and before their start signal shall stop their engine and complete a two-turns penalty before starting.

## **10 FINISHING**

### **10.1 FINISH LINE**

10.1.1 The Finishing Line will be the transit of the Diamond on the Race Station and the no.2 buoy if laid and between the no.2 buoy and the outer pier. The line will be approached after rounding the appropriate No3 or No8 buoy, if laid, on its correct side. If the no.2 buoy is missing then competitors must finish within 100 meters of the outer pier.

10.1.2 The finish line is designated as a continued obstruction unless finishing or completing a lap.

### **10.2 FINISH SIGNALS**

10.2.1 A horn and a light will be given to each yacht that has sailed the Race on crossing the Finish Line.

10.2.2 Should all yachts not finish by being out-of-time, the time of the last passing of the Start-Finish line will be taken as the End-of-Race. Any yacht retiring after this time shall be classified as a finisher.

### **10.3 FINISH LINE AFTER RACING**

Yachts shall clear the Finish Line as soon as possible after Racing and shall not obstruct yachts still racing or the ROs view of the line, passing East of the no2 where applicable.

### **10.4 DECLARATIONS**

Declarations are not required but any yacht ceasing to Race will immediately wear her ensign. Any yacht wishing to Retire after Finishing must report this at once to the Race Officer.

### **10.5 RETIREMENT**

13.5.1 Bay Races: Any Yacht "Retiring" during the race MUST immediately inform the race station. And, where possible, fly their ensign to signal their status to other competitors. If the Race Station cannot receive the transmission due to the Castle Headland the Yacht should keep trying until the Race Station acknowledges.

10.5.2 Any yacht wishing to retire after finishing shall report this at once to the Race Officer.

10.5.3 Any yacht flying an ensign shall be classed as not racing and will not feature in the results

## **11 PENALTIES**

11.1 RRS 44.1 & 44.2 shall apply. (Two-turns penalty to exonerate infringement of a rule in Part 2 of the RRS)

11.2 RRS 45 modified. A yacht may use her engine or manual power after her Preparatory Signal providing that she stops her engine and, prior to Starting, completes a two-turns penalty (as defined by RRS 44.2).

11.3 The Exoneration Penalty [and the Advisory Hearing and RYA Arbitration procedures] of the RYA Rules Disputes Procedures will be available.

## **12 TIME LIMITS**

12.1 The time limit will be announced by VHF Ch 37a/M1 prior to the start of each race.

## **13 PROTESTS**

Competitors to notify the Race Office of intention to protest ASAP after finishing. Protests shall be in writing and submitted to the Race Officer within the protest time limit.

13.1 For each class, the protest time limit is 90 minutes after the last boat has finished the last race of the day or one hour of returning to harbour, whichever is the later. [The same time limit applies to protests by the race committee and protest committee about incidents they observe in the racing area and to requests for redress. This changes RRS rules 61.3 and 62.2.] Protests will be heard by the Protest Committee in accordance with Part 5 of RRS.

13.2 Notices will be posted within 30 minutes of the protest time limit to inform competitors of hearings in which they are parties or named as witnesses. Hearings will be held in the jury room, located at the clubhouse, beginning as soon as possible after racing.

## **14 SCORING**

14.1 The Low Point scoring system of RRS Appendix A will apply with the amendment that boats disqualified will be awarded 2 points more than the number of boats entered in the series. This amends RRS rule A4.

## **15 SAFETY REGULATIONS**

15.1 A boat that retires from a race shall notify the race committee as soon as possible.

### **15.2 MINIMUM REQUIREMENTS**

All yachts whilst Racing shall comply structurally with and have on board ALL the gear and equipment specified in the World Sailing Offshore Special Regulations Appendix B with the addition of a VHF radio, first aid kit and working navigation lights. The responsibility for compliance rests with the person in charge of the yacht and cannot be delegated. Entries will not be accepted from any yacht not agreeing to and fully complying with these requirements. Any yacht found racing and not complying will be penalised and may be disqualified.

15.3 Sportsboats to comply with their class safety regulations.

## **16 EQUIPMENT AND MEASUREMENT CHECKS**

A boat or equipment may be inspected at any time for compliance with the class rules and sailing instructions. On the water, a boat can be instructed by a race committee measurer to proceed immediately to a designated area for inspection.

## **17 PRIZES**

A trophy will be awarded for first overall in regatta.

## **18 Risk Statement**

RRS Rule 3 of the Racing Rules of Sailing states: "The responsibility for a boat's decision to participate in a race or to continue racing is hers alone."

Sailing is by its nature an unpredictable sport and therefore inherently involves an element of risk. By taking part in the event, each competitor agrees and acknowledges that:

- a) They are aware of the inherent element of risk involved in the sport and accept responsibility for the exposure of themselves, their crew and their boat to such inherent risk whilst taking part in the event.
- b) They are responsible for the safety of themselves, their crew, their boat and their other property whether afloat or ashore.
- c) They accept responsibility for any injury, damage or loss to the extent caused by their own actions or omission.
- d) Their boat is in good order, equipped to sail in the event and they are fit to participate.
- e) The provision of a race management team, other officials and volunteers by the event organiser does not relieve them of their own responsibilities.
- f) They are responsible for ensuring that their boat is equipped and seaworthy so as to be able to face extremes of weather; that there is a crew sufficient in number, experience and fitness to withstand such weather; and that the safety equipment is properly maintained, stowed and in date and is familiar to the crew.

## **19 INSURANCE**

Each participating boat shall be insured with valid third-party liability insurance with a minimum cover of £3,000,000 per event or the equivalent.